

Weather Routing, Inc. (WRI) offers a variety of forecast services for commercial shipping fleets. Our detailed route/weather advisories provide the necessary information for safe and optimum transits.

WRI combines the best of technology with experienced marine meteorologists available 24/7 to provide accurate, detailed forecasts. We continuously monitor and analyze weather and ocean current patterns to recommend the optimum route: **Safe, Fast, and Efficient.** Your vessels and land-based operations are always kept well aware of upcoming weather conditions and suggested routing.

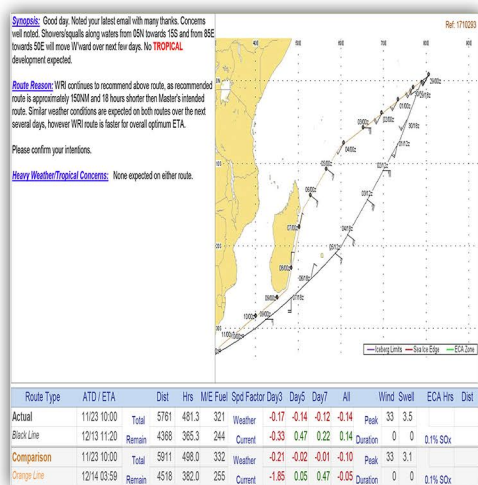
WRI Route and Forecast for Sample Vessel Weather Routing Inc. (WRI), Ltd.
Prepared on Nov 29 02:48

SINGAPORE to CAPE TOWN Forecast (Arrival - 12/13 11:20z) Sunrise: 06:23 SunSet: 18:28 (ST)

Route Recommendation (Remains Valid) : GC 20-00S/60-00E, GC abeam Cape Recife, then direct to Cape Town via abeam Cape of Good Hope

Forecast Period	Wind Dir	Wind Spd (Beaufort)	Swell Dir	Swell Hght (Meters)	Per Vis (sec)(nm)	Sky Conditions / Advisory	Currents Dir From/Knots
29/02Z-06Z	SSW-WSW	5-6	SW-W	1.5-2.5	06 10	ISOLATED SHWRS/SQUALLS	WSW @ 2kts Air Temp 81°/27°
29/06Z-12Z	SW-W	4-5 BRF 6	SW-W	1.5-2.5	06 11	ISOLATED SHWRS/SQUALLS	WSW @ 2.1kts Air Temp 82°/28°
29/12Z-18Z	SW-W	4-5	SW-W	1.0-2.0	06 10	ISOLATED SHWRS/SQUALLS	WSW @ 1.7kts Air Temp 82°/28°
29/18Z-00Z	SSW-WSW	4-5	WSW-WNW	1.5-2.5	06 8	ISOLATED SHWRS/SQUALLS	W @ 2.1kts Air Temp 81°/27°
30/00Z-06Z	S-SW	4-5	SE-S	1.0-2.0	08 9	SCATTERED SHWRS/SQUALLS	WSW @ 1.2kts Air Temp 81°/27°
30/06Z-12Z	S-SW	3-4	SE-S	1.0-2.0	08 10	SCATTERED SHWRS/SQUALLS	SW @ 0.8kts Air Temp 82°/28°
30/12Z-18Z	SSW-WSW	3-4	ESE-SSE	1.0-2.0	08 11	ISOLATED SHWRS/SQUALLS	SSE @ 0.1kts Air Temp 82°/28°
30/18Z-00Z	SSW-WSW	3-4	ESE-SSE	1.0-2.0	08 10	ISOLATED SHWRS/SQUALLS	E / WEAK Air Temp 81°/27°
01/00Z-06Z	SSW-WSW	3-4	SSW-WSW	1.0-2.0	19 10	ISOLATED SHWRS/SQUALLS	ENE @ 0.8kts Air Temp 82°/28°
01/06Z-12Z	S-SW	3-4	SSW-WSW	1.0-2.0	19 11	ISOLATED SHWRS/SQUALLS	E @ 0.8kts Air Temp 83°/28°
01/12Z-18Z	S-SW	3-4	SSW-WSW	1.5-2.5	18 11	ISOLATED SHWRS/SQUALLS	E @ 0.9kts Air Temp 82°/28°

Comments: *Wind/Seas HIGHER in SQUALLS



Pre-Voyage Reports

Optimum Route Recommendation

Detailed Tabular Forecast

Synoptic Weather Discussion

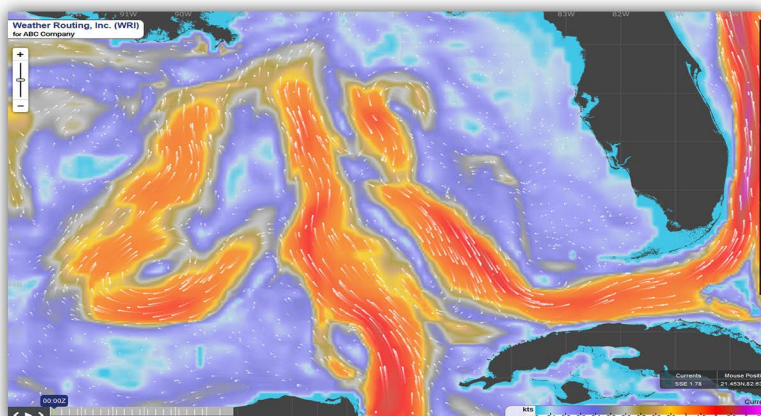
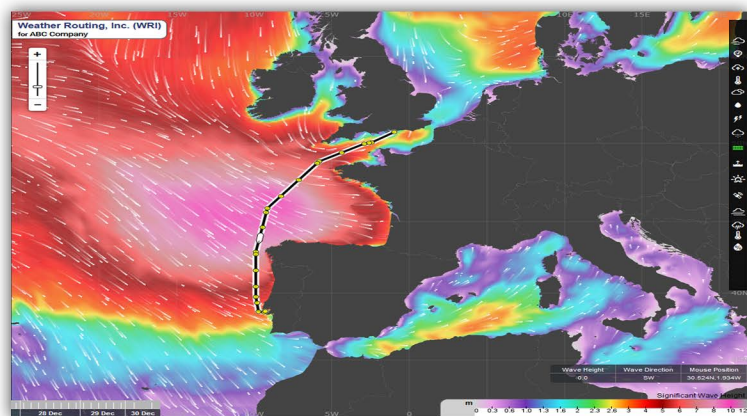
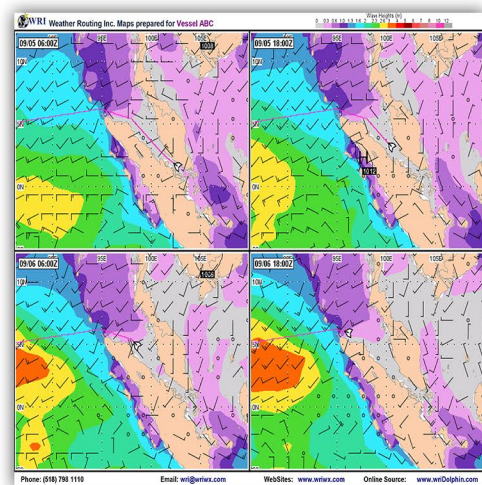
Comparison Route/Forecast

Dolphin OnLine / Dolphin OnBoard

Daily Forecast Maps and Port Forecasts

Earthquake/Tsunami Alerts

24/7 Consultation



With **WRI's** fleet routing services, you can rest assured that your vessels will be advised on the safest and most optimum route, ensuring that they minimize/avoid adverse weather conditions, arriving at their destination safely and on time.